

INCEPTOR GRX INCEPTOR GRX HIGH VOLTAGE

INDUSTRY-BORN.
SPORTS-DRIVEN.



 SKYLOTEC

INCEPTOR. Safety reinvented.



INCEPTOR GRX



INCEPTOR GRX HIGH VOLTAGE



INCEPTOR GRX



INCEPTOR GRX HIGH VOLTAGE



INCEPTOR GRX



Reflecting

INCEPTOR GRX HIGH VOLTAGE



Reflecting

INCEPTOR GRX HIGH VOLTAGE GROUND



For working at ground level – without chin strap

INCEPTOR GRX

Standards: meets partly EN 397
EN 12492 (with
chin strap 500 N)

Head circumference: 54 - 63 cm

Weight: 450 - 458 g

Material: PC/ABS (helmet shell),
EPS (inner core),
PES (chin strap)

INCEPTOR GRX HIGH VOLTAGE

Standards: meets partly EN 397
EN 50365 1.000V a. c.

Head circumference: 54 - 63 cm

Weight: 414 - 461 g

Material: PC/ABS (helmet shell),
EPS (inner core),
PES (chin strap)

USP, FEATURES, BENEFITS



Core made from EPS, Outer shell from Polycarbonat/ABS

EPS CORE

- The specially built EPS thorax and helmet shell made from PC/ABS
- Very high shock absorption in the vertex and lateral areas
- Very high resistance to penetration by sharp objects
- Satisfies all safety-related requirements from industry, construction and climbing

USP, FEATURES, BENEFITS

VENTILATION OPENINGS



Ventilation openings are continued in the inner shell

- Maximum ventilation openings prevent heat accumulation
- Special ventilation mesh ensures optimum air circulation and prevent particles from getting inside

USP, FEATURES, BENEFITS

GEAR RACK – GRX

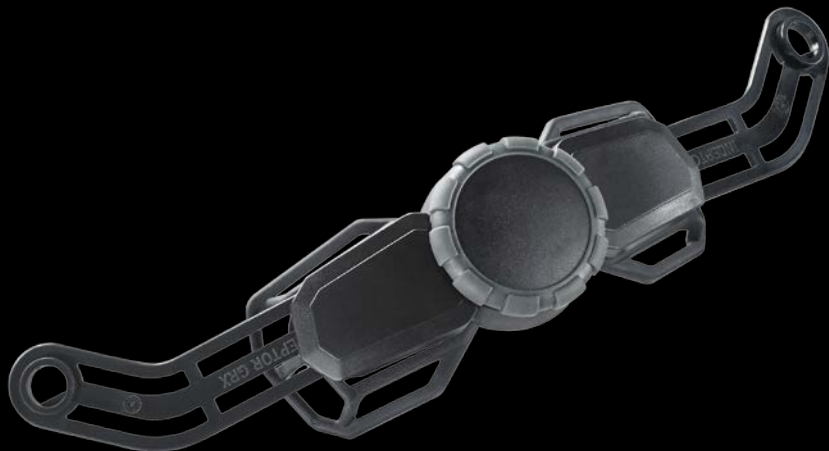
- All models with innovative GEAR RACK
- GEAR RACK and Euroslots for attaching headlamp, hearing and neck protection
- GEAR RACK is interchangeable



Gear Rack X-changeable



STANDARD EQUIPMENT



ADJUSTER

- Stepless width adjustment, 54 - 63 cm
- Perfect fit and maximum wearing comfort
- Sits deep on the back of the head, ergonomic grip
- Interchangeable

Fits on every head

STANDARD EQUIPMENT



FIDLOCK CHIN STRAP – CHIN-X

- Ergonomic magnetic closure for easy opening and closing
- Closes automatically
- No trapping of skin
- Sewn-in velour leather in the chin area for even higher comfort

Available as CHIN-X 250 (Industry) and CHIN-X 500 (Sport)

STANDARD EQUIPMENT



HEAD AND FRONT PADDING

- Perfect fit and maximum wearing comfort
- High-quality material
- All interior padding is interchangeable and washable

Head Pad available in two sizes - 6 and 10 mm

UPGRADABLE ACCESSORIES



HEARING PROTECTION – MUTE 26

- Easily to adapt at the GEAR RACK
- Possibility to fold it up and swing it out



MUTE 26 offers an insulation protection of 26 decibels (SNR)

UPGRADABLE ACCESSORIES



Headlamp, white light 200 / 100 / 50 lm, red light 30 / 10 lm

HEADLAMP – HIGH LIGHT

- Standard equipped helmet clips hold the band in the right place
- Can also be adapted with a special HIGH LIGHT clip to the Euroslot on the front of the helmet
- KLIPIX helmet clips are exchangeable



UPGRADABLE ACCESSORIES



REFLECTIVE STICKERS – HERE I AM

- Special retroreflecting stickers
- For upgrading the INCEPTOR GRX models without standard equipped stickers
- Stickers can be easily taken from the transfer foil and fixed to the helmet

Stickers strongly reflect when being illuminated

UPGRADABLE ACCESSORIES



NECK PROTECTION – NECKZ

- High-tech canvas fabric protects against UV rays and is also cooling
- Can be easily adapted to the Euroslot in the inner back of the helmet



UV protection for working in the sun

UPGRADABLE ACCESSORIES



SUN PROTECTION – SOMBREROX

- Protects the user from being blinded by the sun and from dangerous UV rays
- Can be fixed at the 4 helmet clips KLIPIX as well

Sun protection for regions where workers are exposed to the sun

UPGRADABLE ACCESSORIES



HELMET CAP

- High performance Gore-Windstopper material
- Comfortable soft fleece
- Fits like a second skin under the helmet and protects the wearer from the cold

Warming helmet cap – perfect to wear under INCEPTOR GRX

